

The Dominica Grande

5 BEDROOMS, 6 FULL & 2 HALF BATHS, LOFT + CLUB ROOM, COVERED BALCONY, 3-CAR GARAGE

1ST FLOOR

1st Floor Living A/C Area

Covered Entry
Covered Lanai
1-Car Garage
2-Car Garage
2nd Floor Covered Balcony

3,751 Sq. Ft.

142 Sq. Ft.
527 Sq. Ft.
283 Sq. Ft.
491 Sq. Ft.
381 Sq. Ft.

2nd Floor Living A/C Area

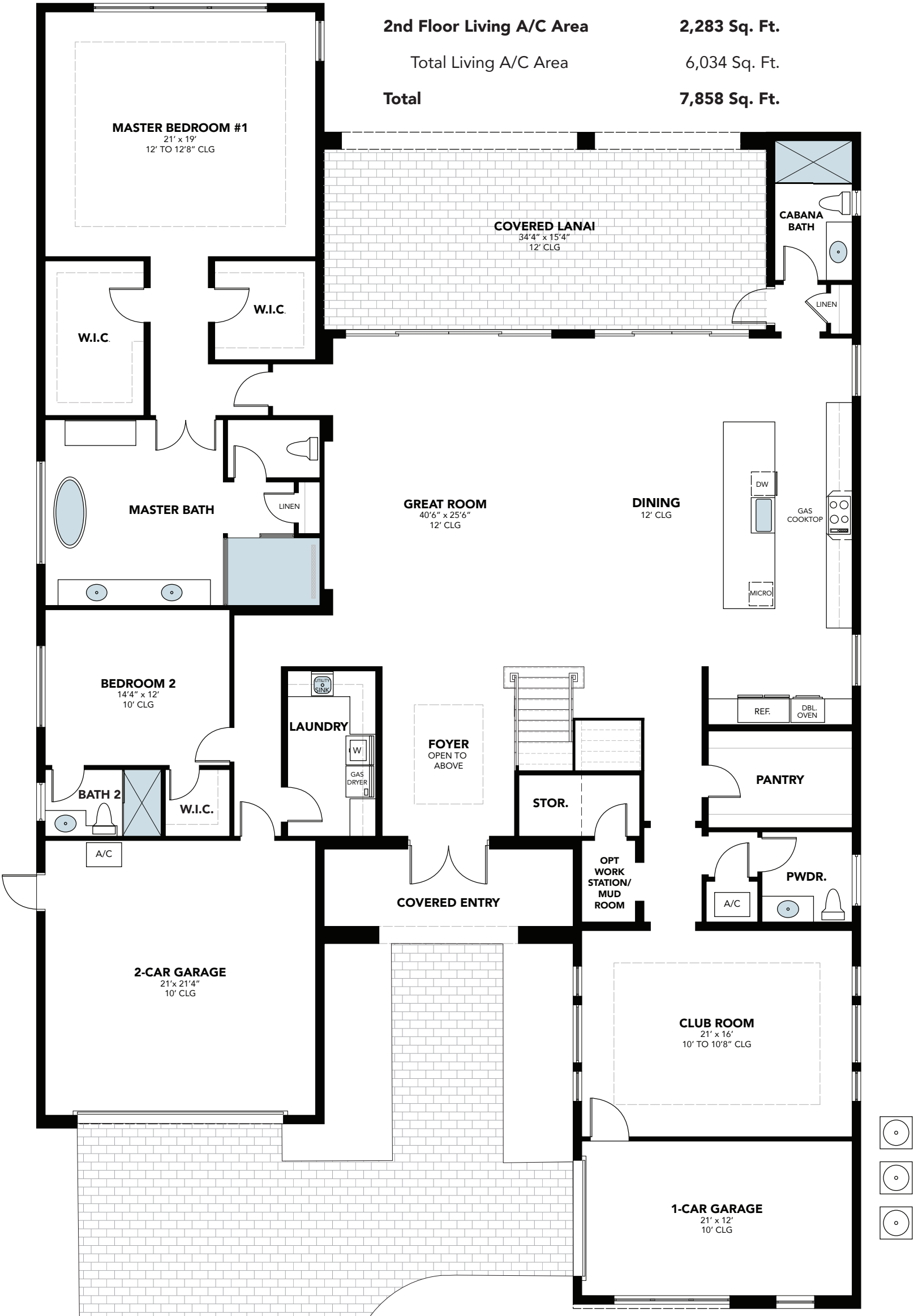
Total Living A/C Area

2,283 Sq. Ft.

6,034 Sq. Ft.

Total

7,858 Sq. Ft.



CORAL ISLES

THE ESTATE HOME COLLECTION AT AVENIR

The Dominica Grande

5 BEDROOMS, 6 FULL & 2 HALF BATHS, LOFT + CLUB ROOM, COVERED BALCONY, 3-CAR GARAGE



1st Floor Living A/C Area	3,751 Sq. Ft.
Covered Entry	142 Sq. Ft.
Covered Lanai	527 Sq. Ft.
1-Car Garage	283 Sq. Ft.
2-Car Garage	491 Sq. Ft.
2nd Floor Covered Balcony	381 Sq. Ft.
2nd Floor Living A/C Area	2,283 Sq. Ft.
Total Living A/C Area	6,034 Sq. Ft.
Total	7,858 Sq. Ft.

CORAL ISLES

THE ESTATE HOME COLLECTION AT AVENIR