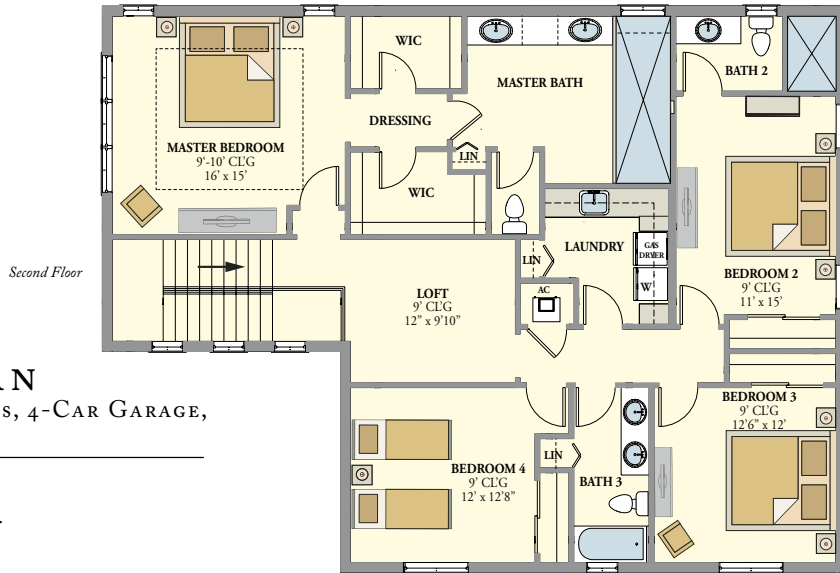


Optional expanded Owner's Suite shown in model home.



THE BANYAN

5 BEDROOMS, 4.5 BATHS, 4-CAR GARAGE, STUDY + LOFT

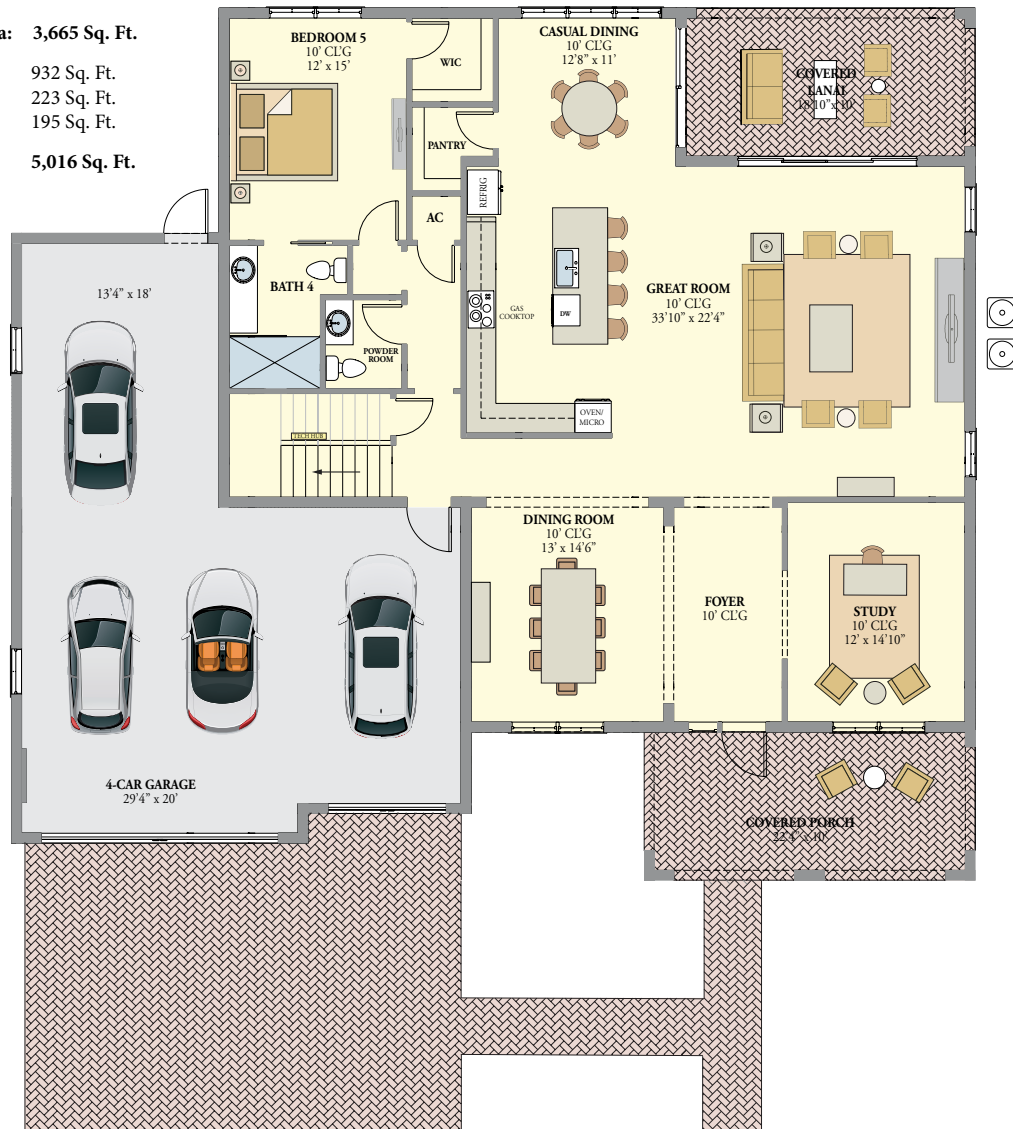
1ST FLOOR
Living A/C Area: 2,048 Sq. Ft.

2ND FLOOR
Living A/C Area: 1,617 Sq. Ft.

Total A/C Area: 3,665 Sq. Ft.

Garage: 932 Sq. Ft.
Porch: 223 Sq. Ft.
Lanai: 195 Sq. Ft.

Total: 5,016 Sq. Ft.



PLANS AND ELEVATIONS ARE ARTIST'S RENDERINGS ONLY. THEY MAY NOT ACCURATELY REPRESENT THE ACTUAL CONDITION OF A HOME AS CONSTRUCTED, AND MAY CONTAIN OPTIONS WHICH ARE NOT STANDARD ON ALL MODELS. KENCO RESERVES THE RIGHT TO MAKE CHANGES TO THESE FLOOR PLANS, PRICES, SPECIFICATIONS, DIMENSIONS, DESIGNS AND ELEVATIONS WITHOUT PRIOR NOTICE. STATED DIMENSIONS AND SQUARE FOOTAGE ARE ESTIMATED AND SHOULD NOT BE USED AS REPRESENTATION OF THE HOME'S ACTUAL SIZE OR NET USABLE SQUARE FOOTAGE WHICH MAY BE LESS THAN THE ESTIMATED SQUARE FOOTAGE. ANY STATEMENT, VERBAL OR WRITTEN, REGARDING "UNDER ANY" OR "THROUGH ANY" OR ANY OTHER DESCRIPTION OR MODIFIER OF THE SQUARE FOOTAGE SIZE OF ANY HOME IS A SHORTHAND DESCRIPTION OF THE MANNER IN WHICH THE SQUARE FOOTAGE WAS ESTIMATED AND SHOULD NOT BE CONSTRUED TO INDICATE CERTAINLY GARAGE OR LOT SIZES MAY VARY FROM HOME TO HOME AND MAY NOT ACCOMMODATE ALL VEHICLES. LOT SIZES ARE APPROXIMATE AND REFER TO SALES ASSOCIATE FOR EXACT MEASUREMENTS. LAND USES PROXIMATE TO THE PROPERTY - THE FOLLOWING LAND USES ARE OR MAY IN THE FUTURE EXIST NEAR THE PROPERTY: COMMERCIAL, EXCAVATION, ELECTRIC POWER GENERATION FACILITY, REGIONAL WASTEWATER MANAGEMENT RESERVOIRS AND FACILITIES, A LAW ENFORCEMENT TRAINING FACILITY, INCLUDING A SHOOTING RANGE, AN OHIOVA PARK AND ACTIVE AGRICULTURAL USES.

